



HELLO
iCON 2

iCON 2 by **MACSA**
Clean. Fast. Affordable.

Macsa id
a code you can trust



THE SPECIALIST IN
SMALL CHARACTER
LASER CODING,
BY MACSA

iCON 2 is compact, clean, fast and easy to use, and best of all, it uses no consumables. Move on from inkjet and forget about costly and messy inks.

If you have always wanted to change to a laser coding system, but came up against a price barrier, we have good news for you.

iCON 2 by Macsa ID is small character laser coding system that gives you everything you expect from a laser coder without the obstacle of a high price. It is clean, fast, uses no consumables and, most importantly, is within your budget.

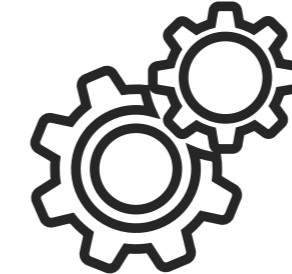
ICON 2 IS EXTREMELY RELIABLE

WITH HIGH QUALITY PERFORMANCE AND A VERY COMPETITIVE PRICE. THIS IS YOUR OPPORTUNITY TO CHANGE.



EASY TO INSTALL

The system is compact, light and easy to connect. It is air-cooled, adaptable and reliable in any setting.



EASY TO INTEGRATE

Developed for easy installation even on complicated production lines.



EASY TO USE

Thanks to the intuitive menus on the touch screen you will be creating messages and controlling your equipment problem free in no time.



EASY TO MAINTAIN

The advanced laser technology and the fact that it does not require consumables will reduce your maintenance budget to a minimum.



EASY TO PURCHASE

iCON 2's cost-effectiveness exposes one of the most popular myths about laser: it is significantly less expensive than other conventional systems.

SWITCHING TO LASER HAS NEVER BEEN SO EASY



1. NO CONSUMABLES

iCON does not use ink. This means very low costs: no consumables budget and no ink system to maintain. Also, no ink means no mess and a cleaner, more hygienic production environment.

2. TOTALLY AFFORDABLE

iCON is unique. Now price is no longer a reason not to use a laser. iCON by Macsa delivers top quality performance at a competitive price.

3. COMPACT AND VERSATILE

iCON will go anywhere. It is small and compact so it can be installed in the most difficult locations. And because it is a laser it can code onto both stationary and moving products. An external controller can be connected if necessary.

4. TRULY RELIABLE.

iCON can be trusted. Because it is based on Macsa's 25 years experience in laser technology it is very reliable; maintenance and repair costs are minimal.

CLEAN. FAST. AFFORDABLE.

TRYING TO MAKE THE MOST OF YOUR BUDGET IS A CHALLENGE.
WE CAN HELP YOU BECOME AN ICON



5. PERMANENT QUALITY MARKING.

No surprises. An iCON print is a permanent print which will last for the lifetime of your product. And it is consistently high quality not dotty like an inkjet; moreover it works with most substrates: labels, cartons, a range of plastics, glass, wood and textiles.

6. FAST.

iCON is a sprinter. It uses high performance optics, powerful hardware and advanced, low overhead software to enable its core laser to meet the speeds of most production lines.

7. SUSTAINABLE

No unwanted ink deposits and no solvent emissions. iCON enables you to keep your environment clean and minimise your carbon footprint.

8. EASY TO USE

Anyone can use iCON. There is an integrated colour touch screen and the interface is intuitive with context sensitive menus which make it easy to navigate. New users learn quickly. Experts users will do even more!



YOU CAN TRUST IN ICON 2



1. FOOD PRODUCTS

The iCON 2 laser provides clear, permanent coding on food products in a variety of materials as paper carton, PET, film...whether fresh, frozen, individual or in packs.



2. PHARMACY

iCON 2 meets the high quality standards of the pharmaceutical sector for the coding of blisters, plastic bottles, labels, tubes and boxes.



3. BEVERAGE

Water, wine, spirits or soft drinks... All drinks containers can be coded with iCON 2, whether made of PET, glass, paper labels or cardboard. iCON 2 can do it all.



4. COSMETICS

Discrete, precise and high quality, iCON 2 carries out perfect coding for products that take great care of personal appearance.



5. HOME CARE

iCON 2 provides high-speed solutions and high contrast in order to cope the most difficult applications regarding packaging for cleaning and household products.

HIGH QUALITY MARKING

FOR A WORLD OF MATERIALS

● Excellent Reaction ● Good Reaction ● Poor Reaction

Family	MATERIAL	TECHNOLOGY
	Substrate	CO2
	wavelength	10.6 μm, 10.2 μm or 9.6 μm
Wood, Paper and Board	Wood	●
	Thermal label	●
	Paper	●
	Board	●
	Metallised Board	●
Food	Fruits and vegetables	●
Glass	Glass	●
	Glass Fiber	●
Ceramics	Ceramic	●
Plastics	Polypropylene (PP)	●
	Low density polyethylene (LDPE)	●
	High density polyethylene (HDPE)	●
	Polystyrene (PS; GPPS and HIPS)	●
	ABS	●
	Polyacetal (POM; polyoxymethylene)	●
	Polyamide (PA)	●
	Polycarbonate (PC)	●
	Polyethylene terephthalate (PET)	●
	Polybutylene terephthalate (PBT)	●
	Polyvinyl chloride (PVC)	●

Family	MATERIAL	TECHNOLOGY	
	Substrate	CO2	
	wavelength	10.6 μm, 10.2 μm or 9.6 μm	
Plastic foams	Silicone coated	●	
	Epoxy resins	●	
	Phenolic resins	●	
	Polyurethane	●	
	Polystyrene foam	●	
Plastic foams	Polyethylene foam	●	
	Polyurethane foam	●	
Plastic films and foils	Aluminized Foil	●	
	Polyethylene terephthalate (PET)	●	
	Oriented polypropylene (OPP)	●	
Metals	Coated metal	●	
	Anodized aluminium	●	
	Steel	●	
	Aluminium	●	
	Copper	●	
	Gold	●	
	Iron	●	
	Metallised board	●	
	Nickel	●	
	Rubber	Natural rubber	●
		Synthetic rubber	●



COMPACT AND ROBUST

WIN-WIN WITH ICON 2



EASY TO SERVICE

The latest in laser technology along with the fact that it does not need expensive spares results in a laser coding system that requires little maintenance and minimal operational costs. No headaches.

- Fast extraction of the filters.
- Simple and reliable system with low number of parts.
- Short list of spare parts.
- Optical parts protected against dust and water.
- Air cool system with no external compress air or water required.
- Electronic system and other components protected to low quality external power supply

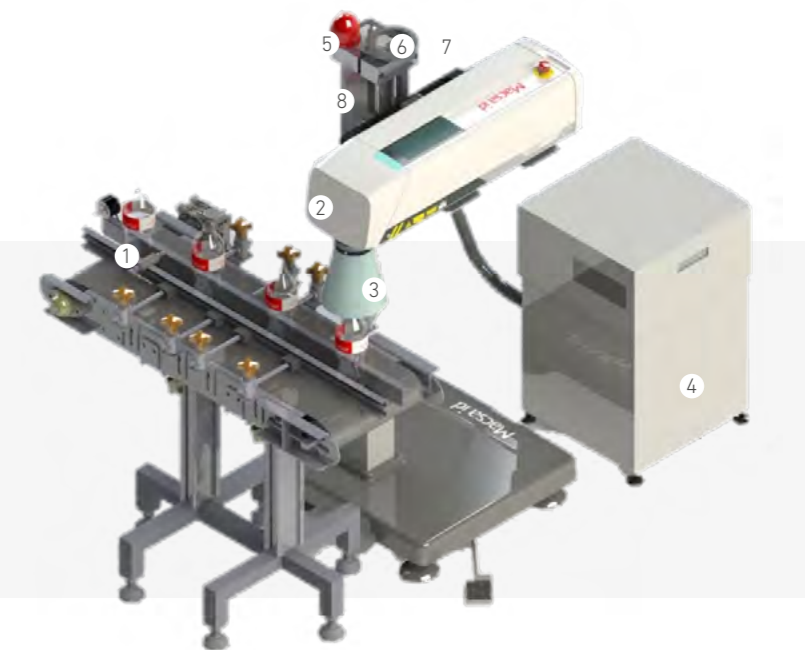
EASY TO INSTALL

The new compact design together along ensures the installation of this system even in the most complicated production lines.

- All in one box.
- Small size and compact system.
- Low weight.
- Easy connectivity.
- Air cool system, not external compress air required, not water cooling system.
- Adaptable and flexible support system.

ACCESSORIES

- | | |
|--------------------|------------------|
| 1. Photocell kit | 5. Photocell kit |
| 2. Encoder kit | 6. Encoder kit |
| 3. Lens protection | 7. Touch screen |
| 4. Fume extractor | 8. Stand |



MACSA ID

SOLUTIONS AND EQUIPMENT FOR **INDUSTRY 4.0**

PRODUCTS	SERVICES	DATA
Management and control of the line production	Remote support	Performance control

TRACK & TRACE

Real-time tracking of production goods to end user alerts when they do not fulfil pre-defined quality standard.

EFFICIENCY & OPTIMIZATION

Based on usage data, you can define more appropriate operation processes in terms of speed, scale and costs.

MAINTENANCE SERVICES

Through continuous monitoring, you can determine when maintenance will be needed, saving on routine maintenance costs and avoiding failures.

IMPROVE PROCESSES

With usage data generated by connected equipment, you can develop or redesign new components / processes to avoid specific failures and eliminate unused features.



The modular software to control, manage and optimize the production line.



REDUCE YOUR CARBON FOOTPRINT AND MAINTENANCE COSTS

Macsa ID strives to offer the best solutions in laser coding and marking which meets our customers and society demands:

iCON 2 will help you reduce your environmental footprint and lower your budget at the same time.



Consumers think that companies have an ethical obligation to operate in a way that does not harm the environment.



Consumers avoid buying from companies that have a negative social or environmental impact.

Source : The Havas Worldwide Report, March 2015

1. **NO CONSUMABLES.** A clean technology that produces no waste.
2. **ENVIRONMENTALLY FRIENDLY.** Does not generate harmful emissions. Good for the work environment and for the planet.
3. **CLEAN.** You will enjoy a cleaner and safer workspace.
4. **ENERGY-EFFICIENT.** Maximum quality and speed of coding and marking with minimum energy consumption.

CODING, TRACING AND MARKING SOLUTIONS WORLDWIDE

Macsa ID provides solutions to meet your coding, identification and traceability needs and to serve manufacturing companies from such as food, cosmetics, pharmaceutical, automotive and electronics.



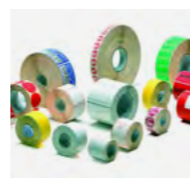
HARDWARE



SOFTWARE



SERVICES



CONSUMABLES

Liderazgo tecnológico



Annual investment of 10% of turnover in R&D



Laser technology innovation with patents registered in more than 30 countries



10% world wide market share in coding and marking laser

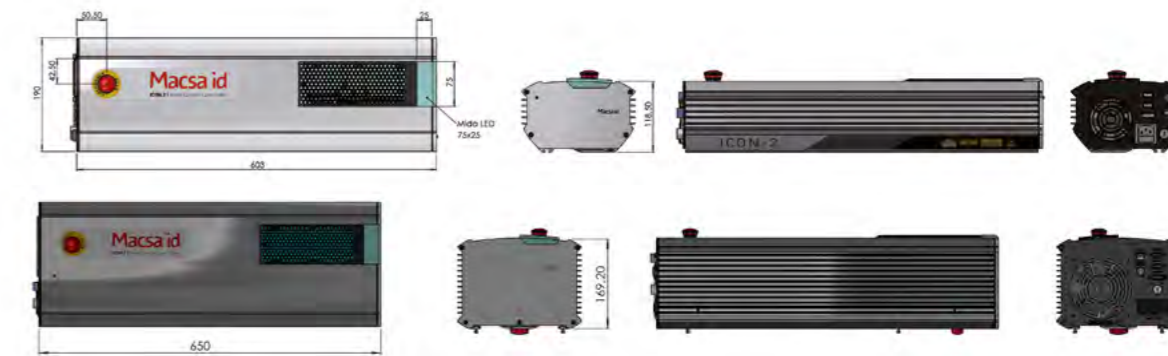


Macsa's solutions and equipment are 4.0 industries ready



iCON 2 by MACSA

Clean. Fast. Affordable.



SYSTEM TYPE	iCON 2-10	
POWER	10W	
WAVELENGTH	10.6µm	
MAINS SUPPLY	115V / 230 V 50/60 Hz	
	(1 Phase + N) 300VA	
DIMENSIONS (AxBxC)	603 x 118,5 x 190	
WEIGHT	Net weight: 10Kg Gross weight: 12Kg	
SYSTEM	Laser, scanners, power supply units, control electronics and CPU in the laser system	
OPTICS	Beam diameter (µm)	Power density (kW/cm ²)
	<324 -S	24.3
	µ: microns E: Estándar O: Optional Built for marking at 90°	
	OPTIONAL	
SOFTWARE	<ul style="list-style-type: none"> ScanLinuxV5.3.8 and higher Marca Lite software 	
USER INTERFACE	<ul style="list-style-type: none"> Touch screen PC 	
CONTROL	<ul style="list-style-type: none"> Touch screen with ScanLinux software. MarcaLite® software, with security key and Ethernet (TCP / IP) cable connection 	
MARKING HEAD	<ul style="list-style-type: none"> CO₂ sealed laser tube. RF Technology Wavelength: 10.6 µm 	
ACCESSORIES / OPTIONS	iCON 2 touch screen terminal – Photocell kit - Photocell - Encoder kit - Alarm Kit - Fume extractor - Plexiglass protection - Ground support - U-ARM assembly support 45x45 - Back pack - Tripod floor stand - Horizontal tripod grip - Vertical tripod grip - Table protection - Marking papers - Protection goggles	
ENVIRONMENTAL CONDITIONS	<ul style="list-style-type: none"> 10° C (50° F) to 40° C (104° F) external temperature Humidity < 95%, without condensation Vibration free area 	



AVOID EXPOSURE
 YOUR EYES ARE VULNERABLE
 LASER RADIATION
 IS EMISSION FROM
 THIS APERTURE
 CLASS II LASER PRODUCT
 EN 60825-1:2014

THE SPECIALIST IN SMALL CHARACTER LASER CODING, BY MACSA



Macsa id
a code you can trust

T. 93 873 87 98
macsa@macsa.com
www.macsa.com
www.iconbymacsa.com



Macsa ID Headquarter
P.l. Pla de Santa Anna
08272 Sant Fruitós de Bages
(Barcelona)
Tel: +34 938 738 798
Spain

Macsa ID UK
13d Old Bridge Way
Shefford
Bedfordshire
SG175HQ
+44 (0)1462 816091
UK

Macsa ID Portugal
Rua Eng. Frederico
Ulrich n. 2650.
4470 - 605 Moreira Maia
Tel: +351 229962204
Portugal

Macsa ID Malaysia
E-8-03, The Gamuda Biz Suites
12, Jln Anggerik Vanilla 31/99,
Kota Kemuning,
40460 Shah Alam
Selangor
Tel: +60 3 5525 1608
Malaysia

Macsa Coding Technology (Shenzhen) Co, Ltd
East side of 2/F, 7 Building
Lijincheng Technology Industry Park
Jihua Road,
Longhua Street, Longhua District
518100 Shenzhen
Tel: +86 0755-23611591
China